



# Tappeto Sofo

made with  
**cc-tapis**

*since [1968] 2023*

**Poltrona**  
info@poltrona.it  
www.poltrona.it

## designer

Superstudio

## description

Dedicated to the homonymous hyperpop modular system by Superstudio, the Sofo rug is the result of research in the archives of Centro Studi Poltrona. Its shape is none other than the marking, designed in the 1960s by the same members of Superstudio, which characterized the product's shipping packages. A composition of concentric circles with, in the central part, typographic shapes of a geometric nature declaring the name of the product. The rug is available in two variants that take up the typical color scores of the sofa: Verosa and Rosancio.

## typology

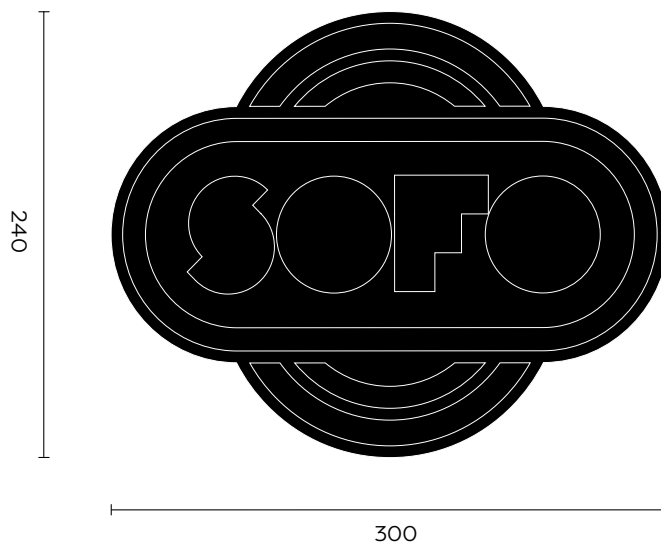
Rug

## dimension

300 x 240[w] cm ( $\pm 2\%$ )

## weight

29 kg







materials

100% Wool.  
Handtufted.

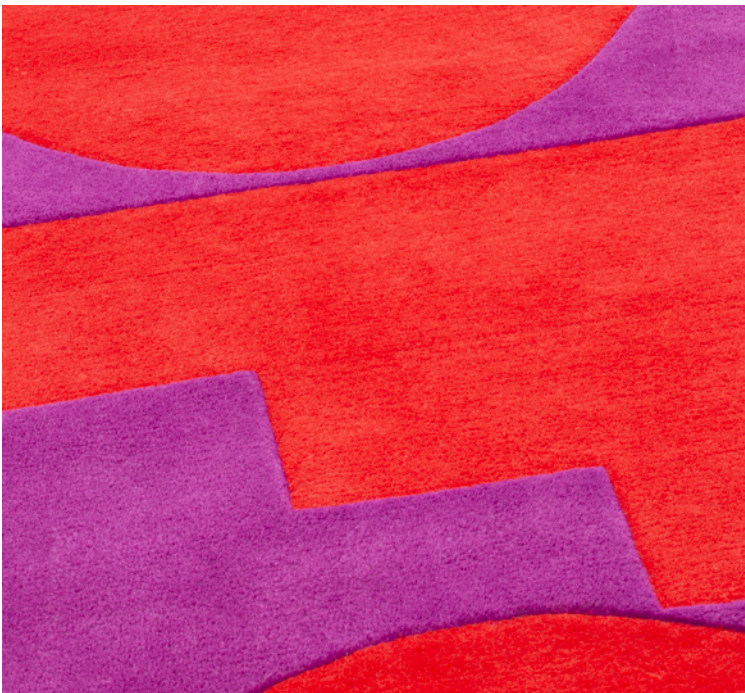
colors

Verosa [Green/Pink]  
Rosancio [Pink/Orange]

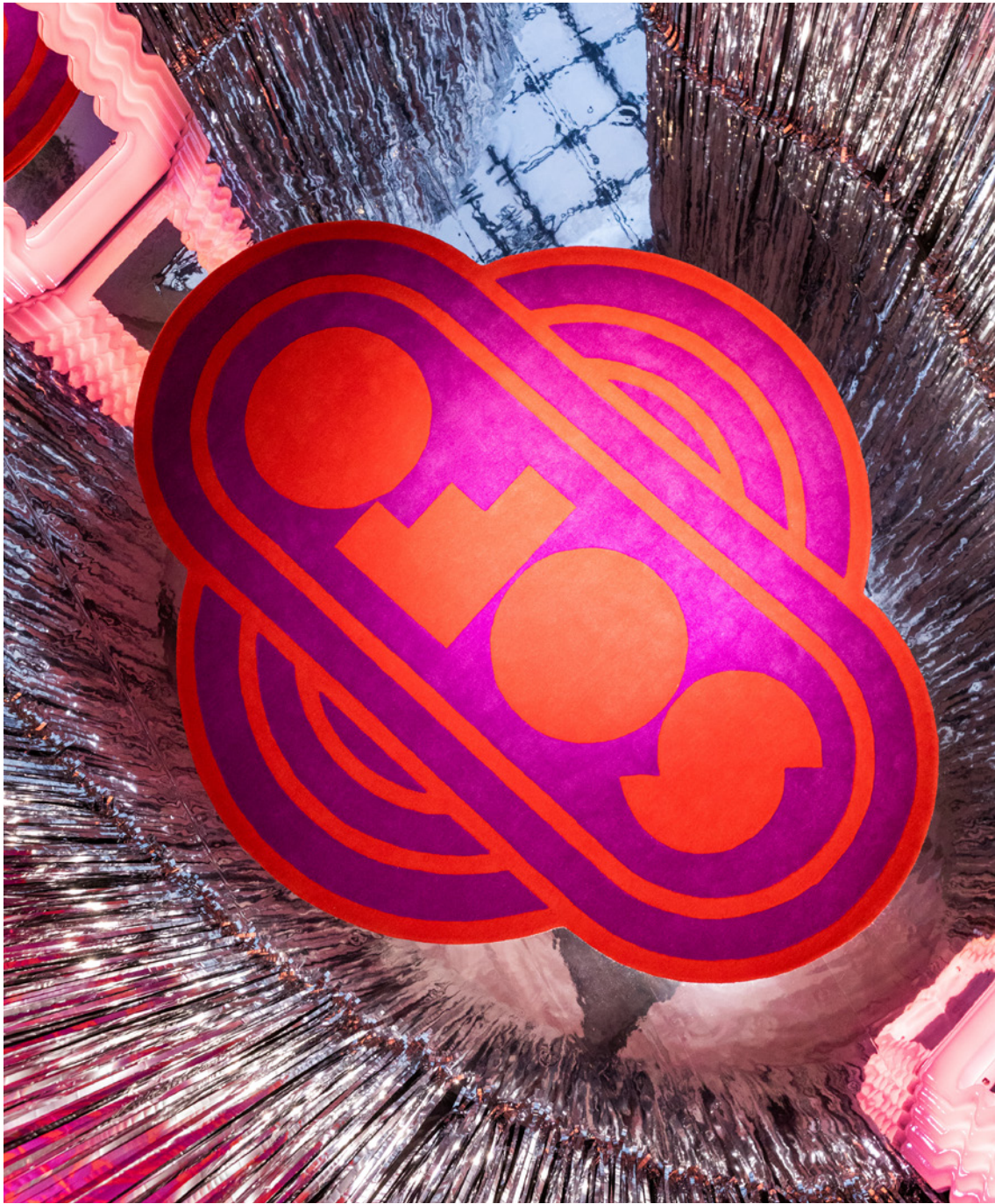
Verosa



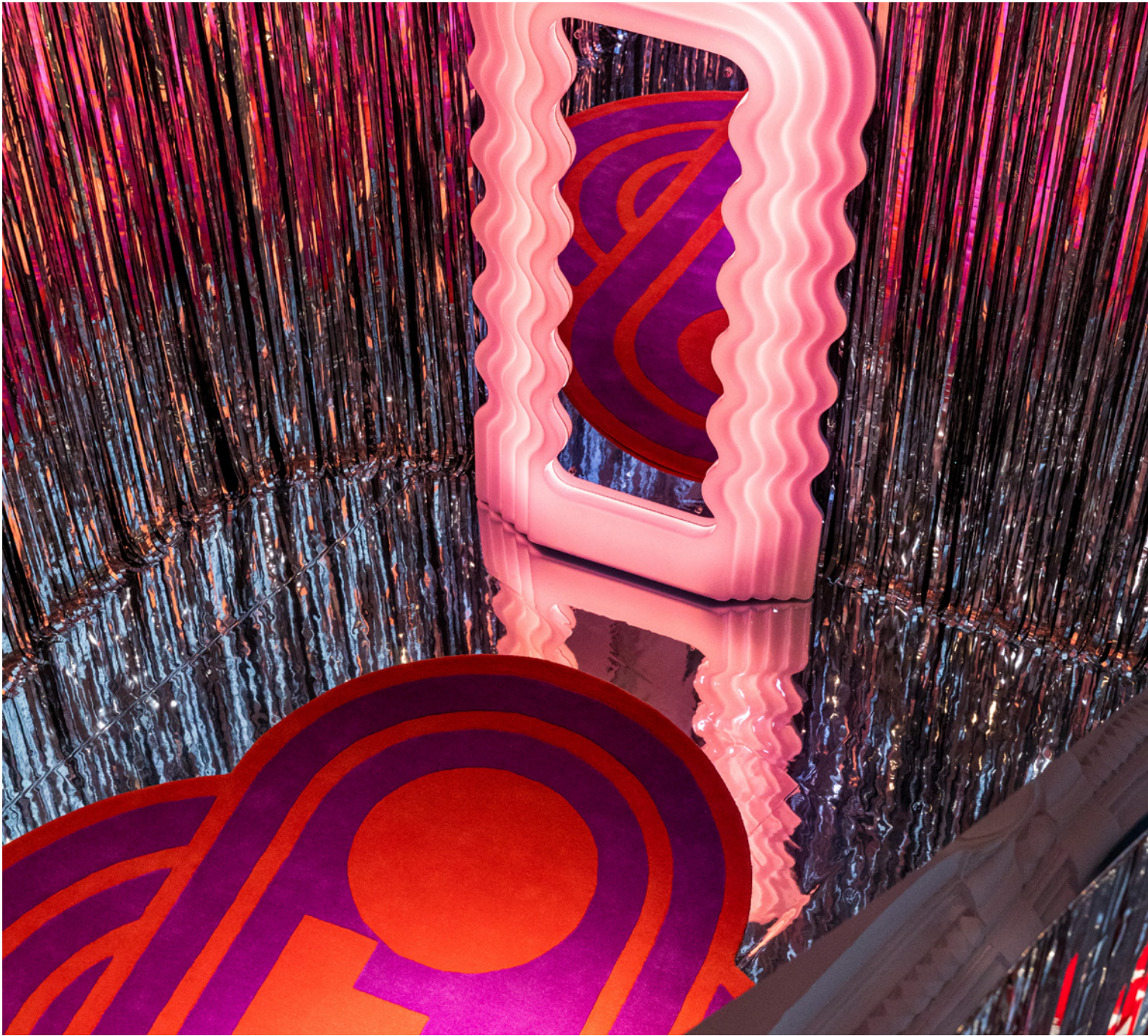
Rosancio







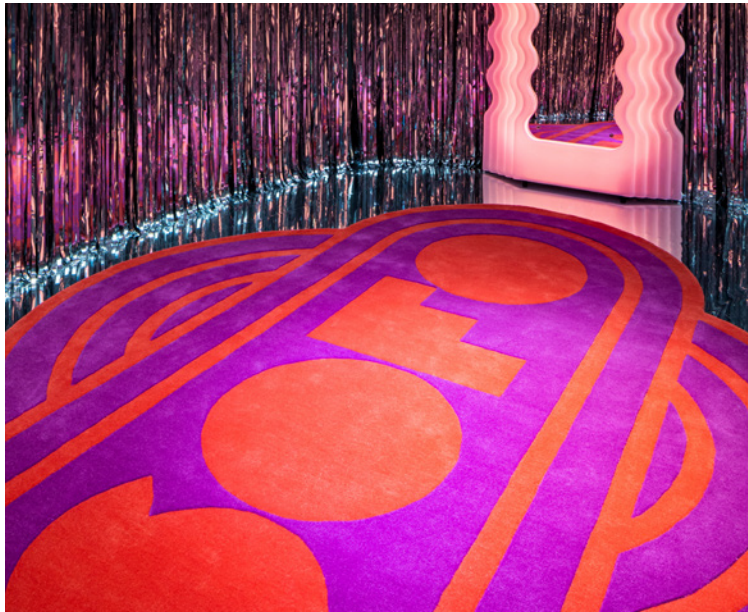
↗ *Ultrafavola, Salone del mobile, Milano. 2023*



↗ *Ultrafavola, Salone del mobile, Milano. 2023*



↗ *Ultrafavola, Salone del mobile, Milano. 2023*



↗ *Ultrafavola, Salone del mobile, Milano. 2023*





**Poltrona**  
info@poltrona.it  
www.poltrona.it

---

image rights

*Any rights holder not mentioned may contact the  
Poltrona team to be traced and mentioned correctly.*

**poltrona**