

Auto strada

since [1990] 2023

Poltrona
info@poltrona.it
www.poltrona.it

designer

Lapo Binazzi

description

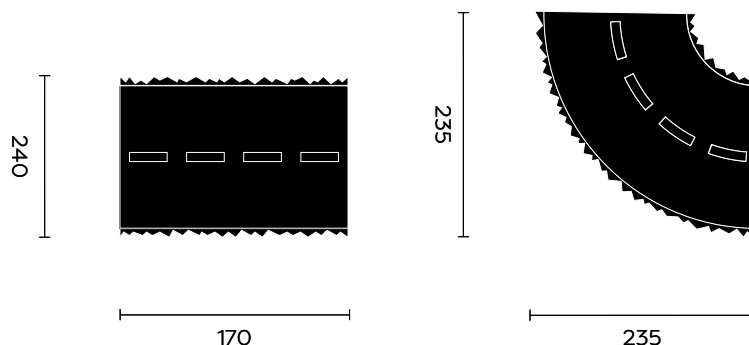
Signed for Poltrona by Lapo Binazzi, Autostrada is exactly what it promises: a roadway modulated in curves and straight lines, available in the three different color combinations in the version reissued by the visionary Florentine designer on the basis of a drawing kept in the archives of the Centro Studi Poltrona per il Design. Produced in a single copy by Poltrona in 1990 on the occasion of the exhibition "Il Dolce Stil Novo [della casa]" curated by Andrea Branzi at the Fondazione Palazzo Strozzi in Florence, the rug returns to show itself as one of the objects that were put on display to investigate the central dimensions of the project, the home, «that is, our survival within the artificial universe, within the violence and vulgarity of the times, in the uprooting accomplished by the intrusive flows of information.»

typology

Rug

dimension and weight

Straight	240[l] x 170[w] cm (± 2%)	19 kg
Curve	235[l] x 235[w] cm (± 2%)	27 kg





materials

100% Wool.
Handtufted.

colors

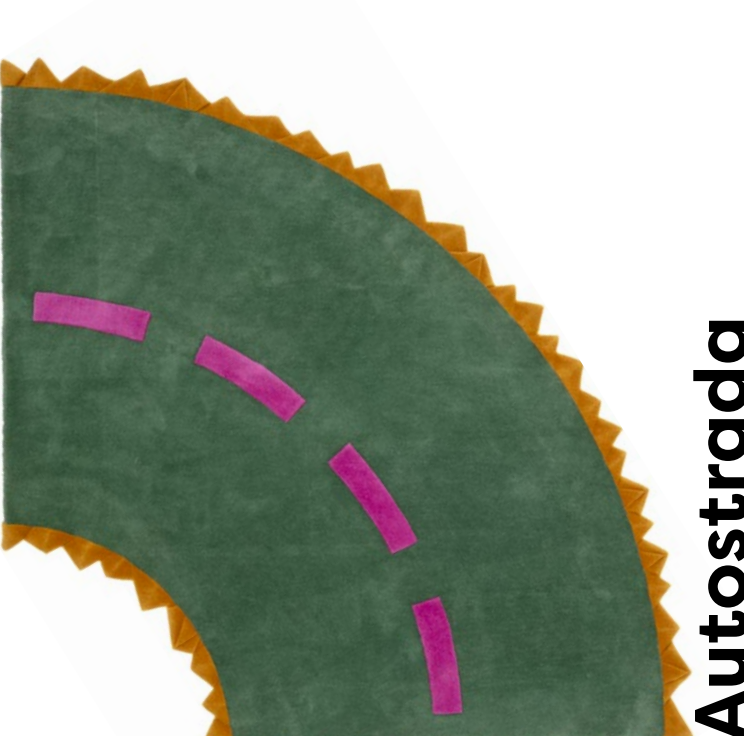
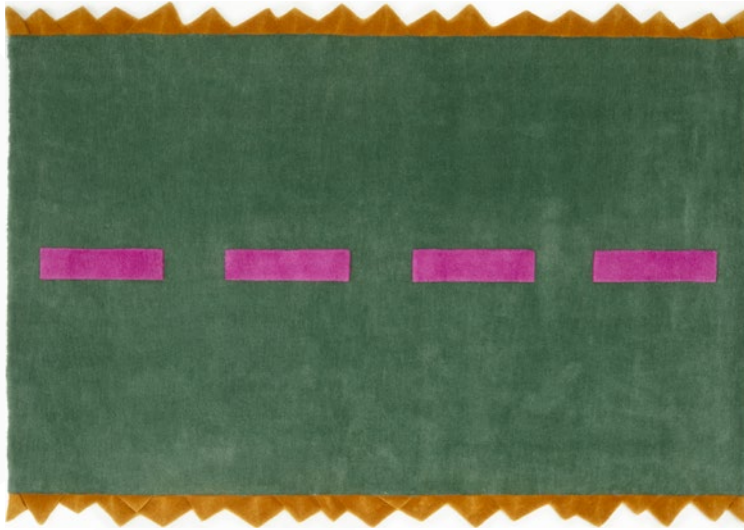
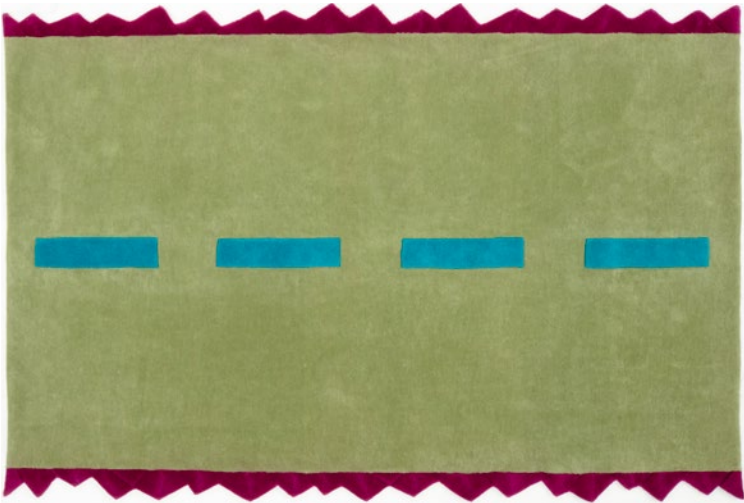
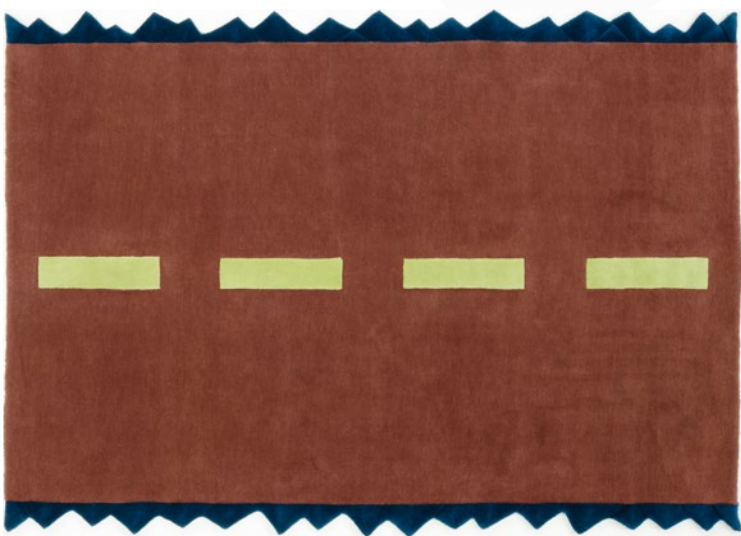
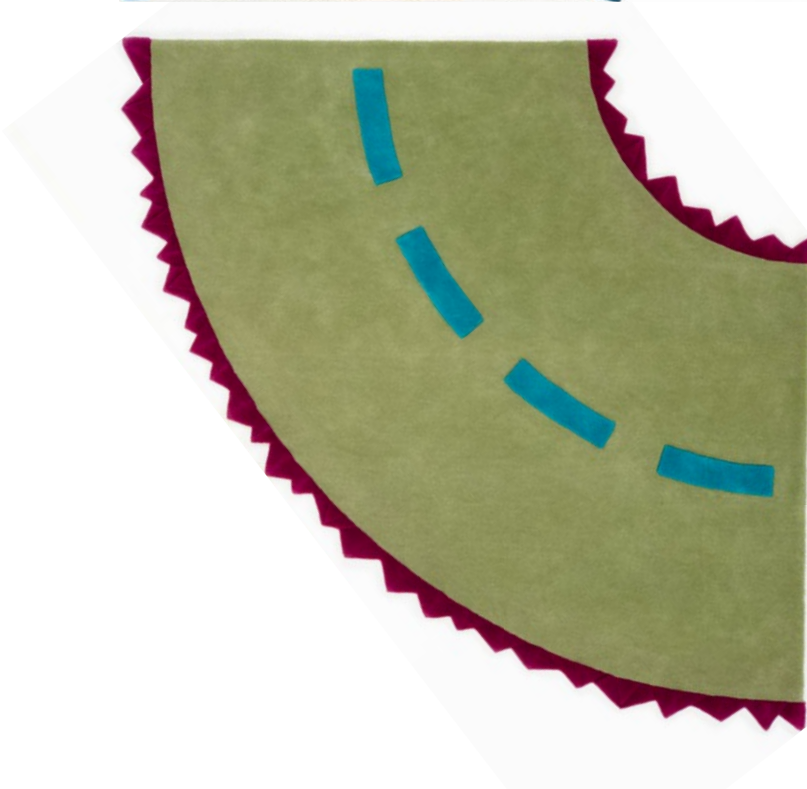
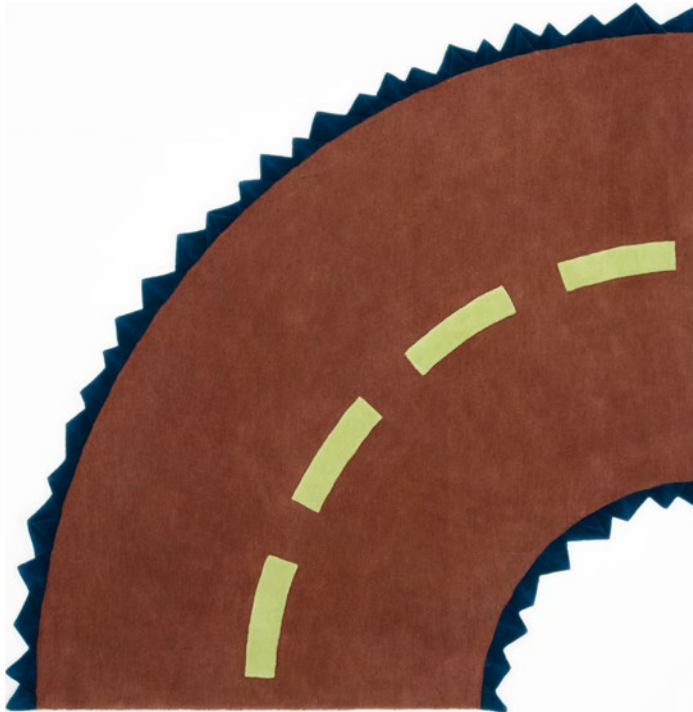
A61 Armoured grey
Raspberry pink
Indian yellow



A62 Pastel gray
Telemagenta
Turquoise

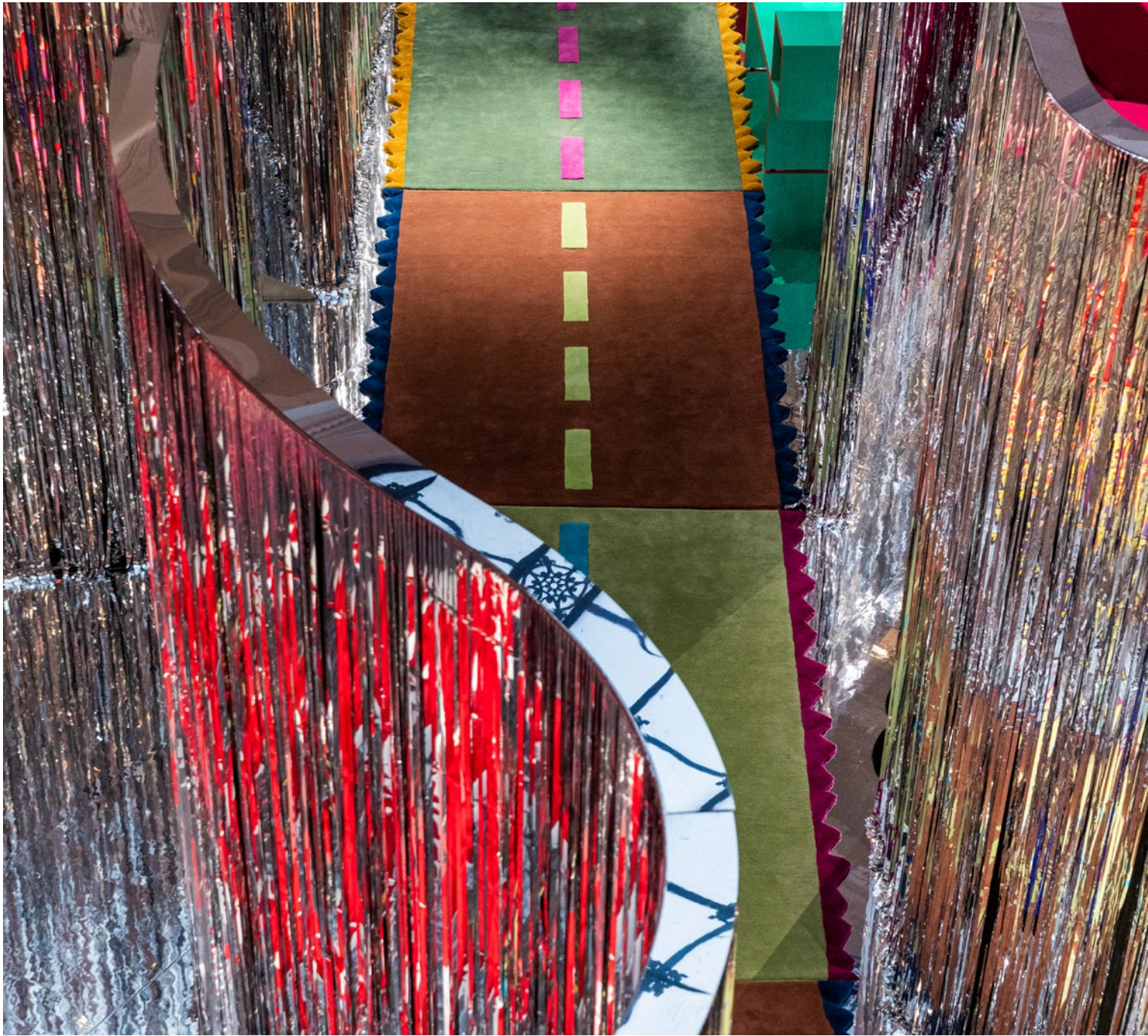


A63 Dove grey
Sapphire blue
Sprout green

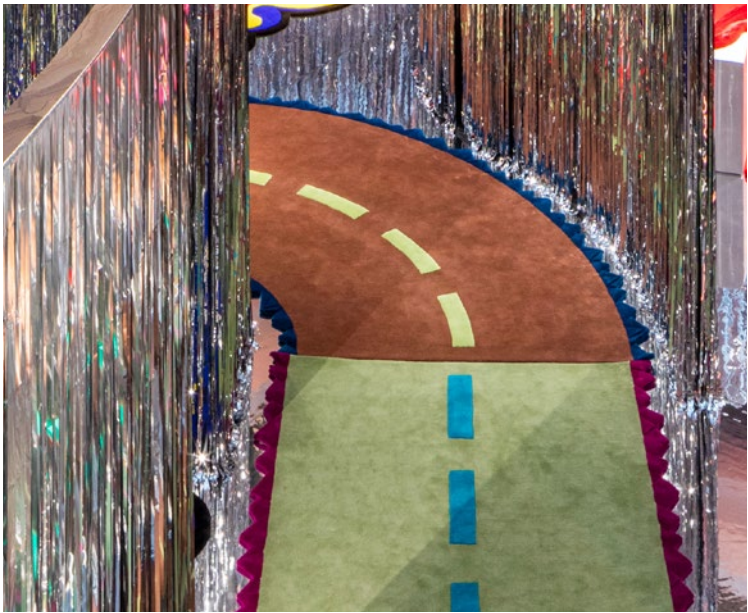




↗ *Ultrafavola, Salone del mobile, Milano. 2023*



↗ *Ultrafavola, Salone del mobile, Milano. 2023*



↗ *Ultrafavola, Salone del mobile, Milano. 2023*



Poltrona
info@poltrona.it
www.poltrona.it

image rights

*Any rights holder not mentioned may contact the
Poltrona team to be traced and mentioned correctly.*

poltrona