



Passi flora

since 1967

Poltrona
info@poltrona.it
www.poltrona.it

designer

Superstudio

description

The Passiflora lighting fixture comes from a painted cardboard prototype made for the exhibition “Superarchitettura” [December 1966], a manifesto of Radical Design. The cardboard was replaced with a light-permeable material, transforming Passiflora into a truncated luminous column: a column whose deformed profile wavers between natural and artificial, in a game of allusions and ambiguities, corresponding to the statement of intent of Superstudio, summed up in the text “Invention Design and Evasion Design”.

typology

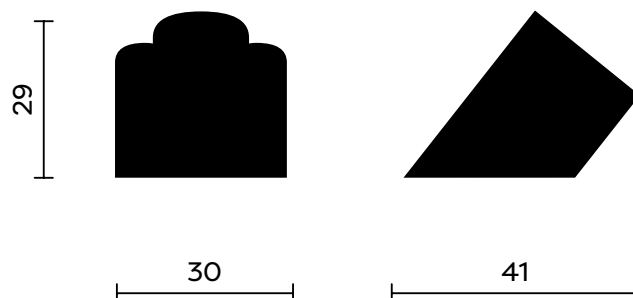
Table lamp

dimension

30 × 41 × 29 [h] cm

weight

1.5 kg





materials

PMMA

colors

White opaline body
and yellow flower

Yellow



Passiflora



Ph. Serena Eller

↶ Africano, Cluster Palazzo Brancaccio, Rome. 2021



Ph. Serena Eller

↶ Africano, Cluster Palazzo Brancaccio, Rome. 2021



Ph. Serena Eller

↶ Africano, Cluster Palazzo Brancaccio, Rome. 2021



↘ *The Student Hotel, Florence. 2020*



Ph. Pietro Savorelli

↘ *Poltronova Headquarter, Florence. 2020*

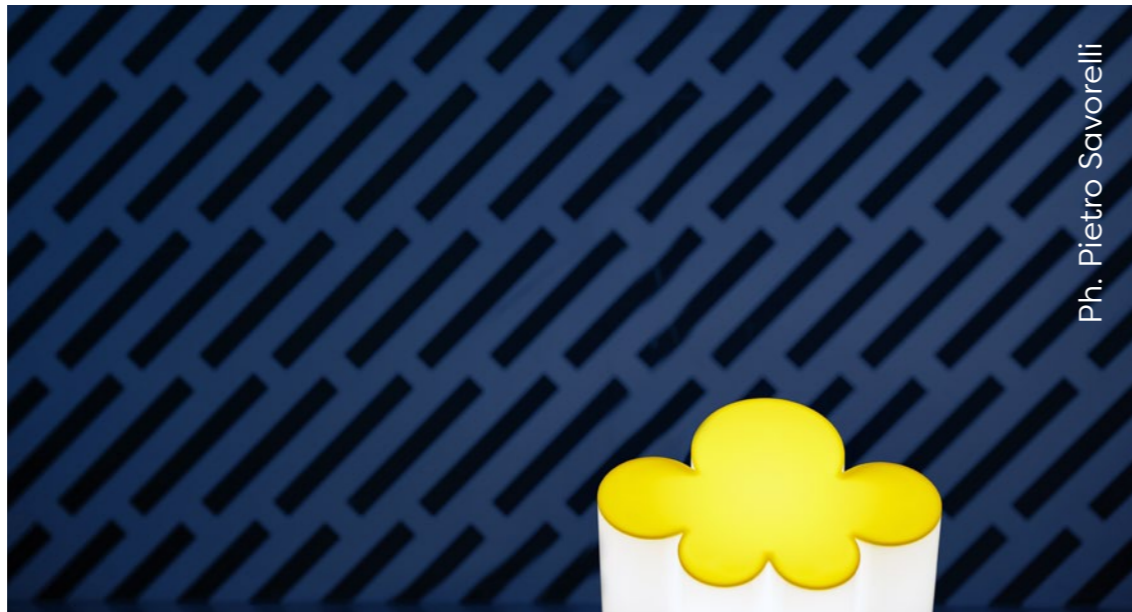


Ph. Donatello D'Angelo



Ph. Donatello D'Angelo

↗ *Poltronova Headquarter, Florence. 2020*



Ph. Pietro Savorelli

↖ *The Student Hotel, Florence. 2020*



Ph. Michel Figuet

a museum cult

In many temporary exhibition all over the world such as: Superstudio 50 at MAXXI in Rome, Radical Utopias - Beyond architecture: Florence 1966 — 1976 in Florence and Montreal.

↪ *Contemporary Cluster, Rome. 2020*



Ph. Pietro Savorelli

↪ *Domestic Icons, Milan Design Week. 2016*



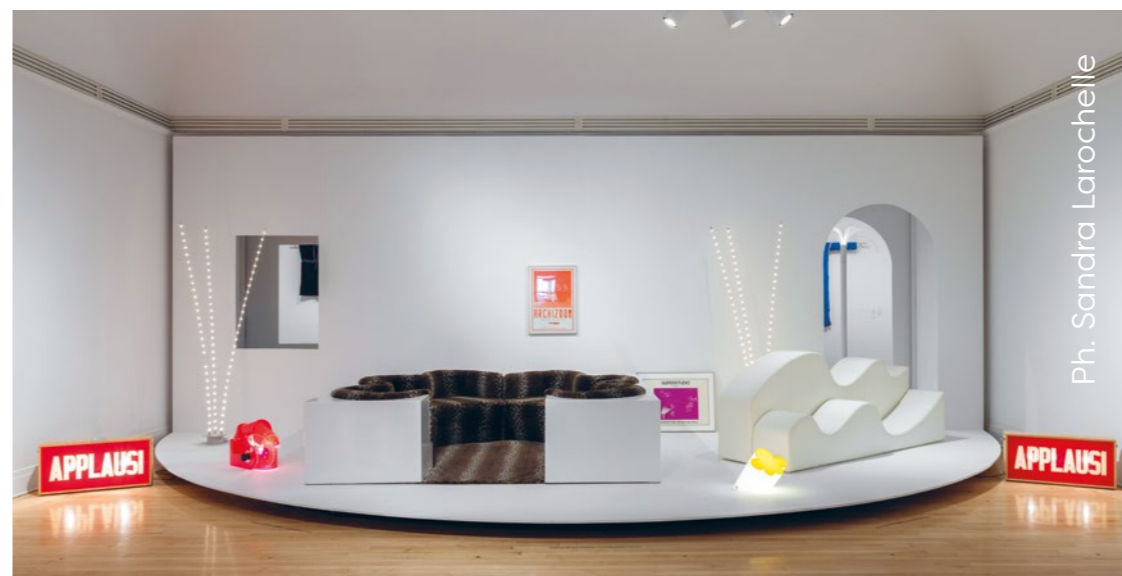
Ph. Antonio Carloni

↪ *What is ornament? Lisbon Triennial. 2019*



Ph. Giovanni Piovene

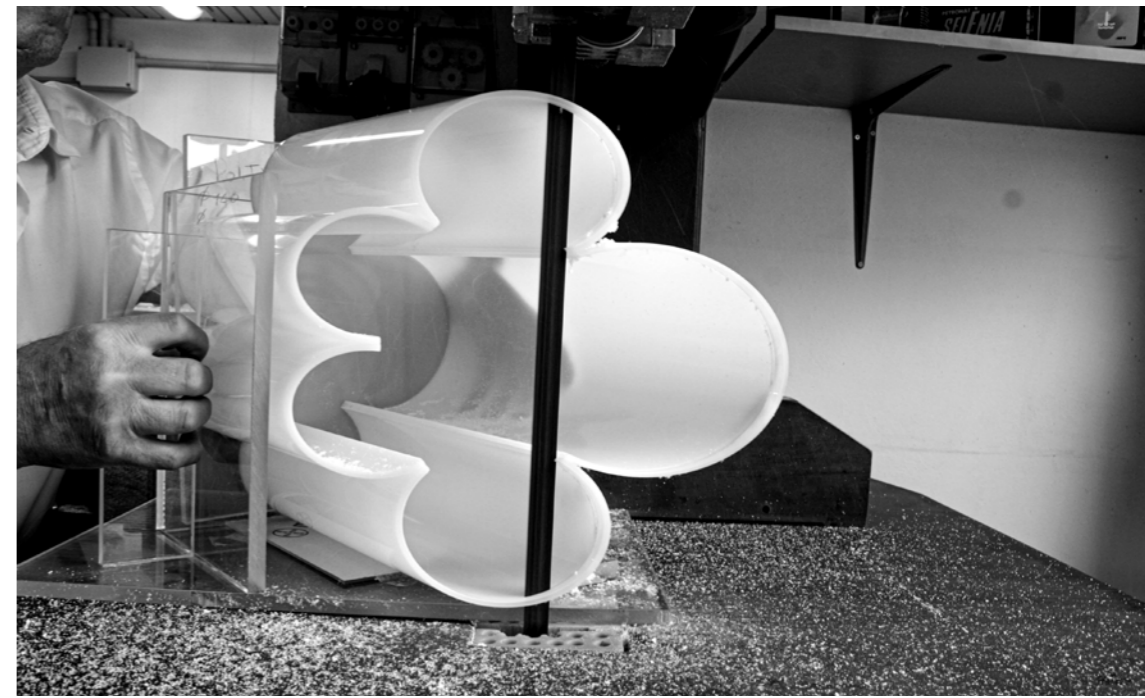
↪ *Radical Utopias. Beyond architecture: Firenze 1966 — 1976, CCA, Montreal. 2018*



Ph. Sandra Laroche



*Poltrona factory,
Aglia. 1967—2020*



Lighting system:
Fluorescent lamp
1 x LED A60
10W | E27
6400K

made in Italy
since 1967

Passiflora is one of the projects of the sixties, with a high degree of craftsmanship.

The tubes, which are used to create the “petals” of the characteristic floral shape, are cut and glued together by hand; then milling between tube and tube is required, since no cutter is small enough for this purpose, a file is used manually, of a kind which usually has applications in the dental field and is called “mouse tail”.





made in Italy
since 1967

The peculiarity of these objects, which from a technological point of view were very rudimentary, was their image: very strong and easily communicable.

Adolfo Natalini



Ph. Cristiano Toraldo di Francia



Poltrona
info@poltrona.it
www.poltrona.it

image rights

*Any rights holder not mentioned may contact the
Poltrona team to be traced and mentioned correctly.*

poltrona